

The background of the advertisement is a composite image. On the right, two industrial workers in hard hats and safety vests are silhouetted against a bright, hazy sky. In the center, an industrial facility with tall chimneys and pipes is visible, with smoke rising from one of the chimneys. On the left, there is a digital overlay consisting of a network of glowing yellow nodes and lines, resembling a data visualization or a complex system. The overall color palette is dominated by yellow, orange, and black.

DGC METPRO SOLUTIONS
METALLURGICAL, PROCESS, ASSET MANAGEMENT
& OPTIMIZATION SOLUTIONS

LEADING THE WAY
IN ASSET INTEGRITY MANAGEMENT & INDUSTRIAL SOLUTIONS

www.dgc-africa.com

SOUTH AFRICA

ZAMBIA

DEMOCRATIC REPUBLIC OF CONGO

MADAGASCAR

ZIMBABWE

BRAZIL

CHINA

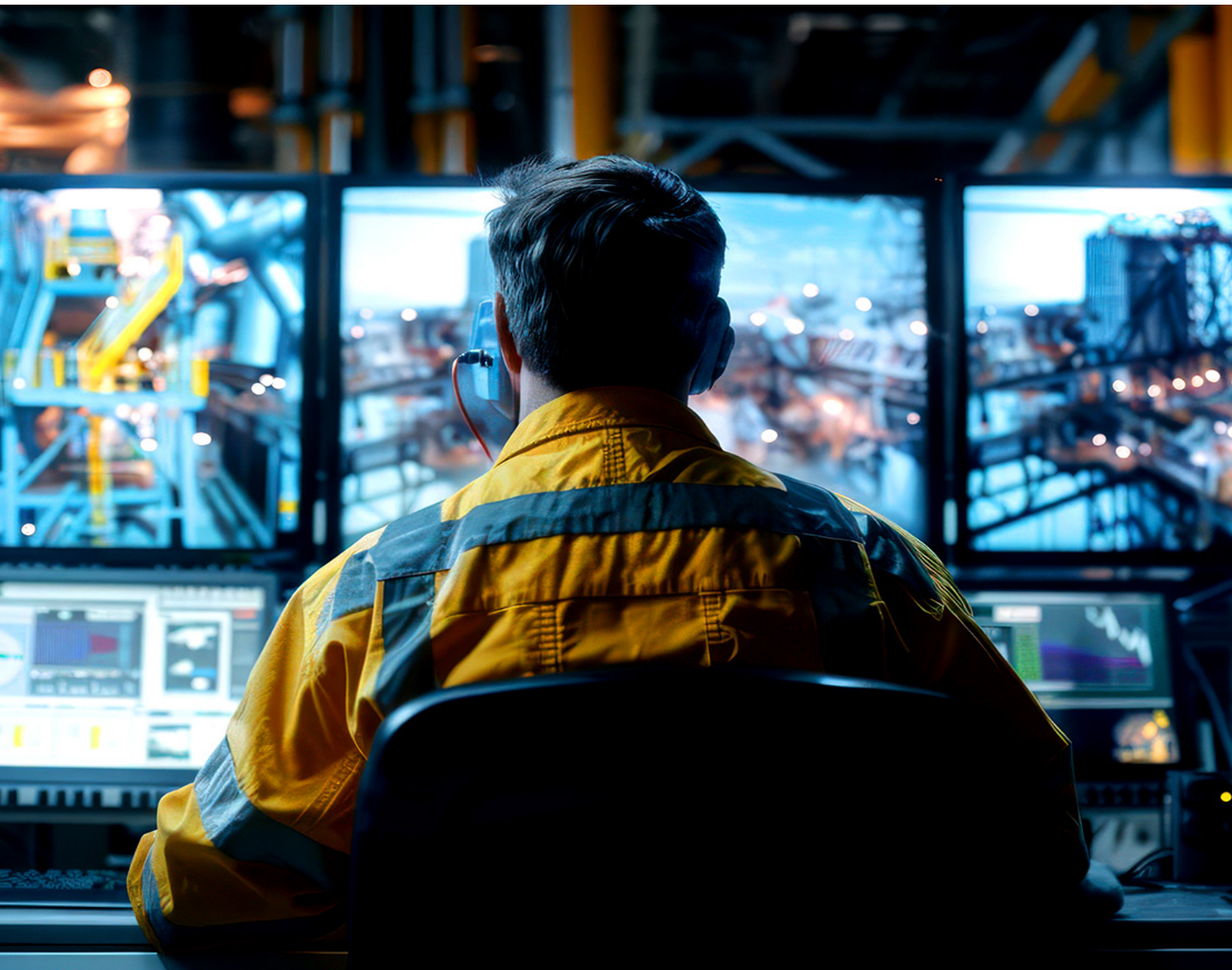


**DGC METPRO SOLUTIONS, A SPECIALIZED COMPANY WITHIN DGC AFRICA,
DELIVERS ADVANCED METALLURGICAL, PROCESS,
ASSET MANAGEMENT, AND OPTIMIZATION SOLUTIONS TAILORED
TO THE MINING AND METALLURGICAL INDUSTRIES.**

By leveraging strategic alliances with industry leaders such as LogiProc, Refractory & Metallurgy Solutions (RMS), and EAMS Africa, we combine cutting-edge technology with deep industry expertise to address the most complex challenges in the sector.

Dedicated to enhancing operational efficiency, sustainability, and asset integrity, **DGC MetPro Solutions** offers a wide range of services that seamlessly integrate innovative process engineering, metallurgical expertise, and advanced asset management practices.

OUR HIGHLY TAILORED SOLUTIONS
**HELP CLIENTS ACHIEVE
OPTIMAL PERFORMANCE
WHILE ENSURING STRICT
COMPLIANCE
WITH ENVIRONMENTAL &
REGULATORY STANDARDS**





OUR PARTNERS & NETWORK OF EXPERTS

Dedicated to enhancing operational efficiency, sustainability, and asset integrity, **DGC MetPro Solutions** offers a wide range of services that seamlessly integrate innovative process engineering, metallurgical expertise, and advanced asset management practices. Our highly tailored solutions help clients achieve optimal performance while ensuring strict compliance with environmental and regulatory standards.

STRATEGIC PARTNERS

Our partnerships are led by our primary alliance with DGC AFRICA, complemented by collaborations with other industry leaders to enhance our service offerings:

DGC AFRICA

Leader in asset integrity management and industrial solutions across Africa, with a rich history of delivering high-quality services to the mining and metallurgical sectors. As our lead partner, DGC AFRICA provides the backbone of our operational capabilities and industry connections. Their extensive experience in managing complex projects and ensuring asset integrity is crucial to our ability to deliver comprehensive solutions to our clients.

LOGIPROC

South African-based, globally active, process-driven engineering firm specializing in innovative solutions for complex industrial challenges. LogiProc's expertise in process engineering and optimization complements DGC MetPro Solutions' offerings, particularly in metallurgical process improvement and efficiency enhancement. Their advanced methodologies and tools enable us to tackle intricate process-related issues and drive operational excellence for our clients.

REFRACTORY & METALLURGY SOLUTIONS (RMS)

Brings specialized expertise in refractory design, manufacturing, and life optimization to our comprehensive service offerings. RMS's deep knowledge of refractory solutions is crucial for enhancing the durability and efficiency of high-temperature processes in metallurgical operations. Their innovative approaches to refractory management contribute significantly to improving the longevity and performance of critical assets in harsh industrial environments.

EAMS AFRICA

A specialist engineering and technology company at the forefront of integrated enterprise asset management solutions. EAMS Africa brings advanced condition monitoring technologies and cutting-edge digital transformation expertise to our portfolio. Their comprehensive approach encompasses predictive maintenance strategies, real-time asset performance analytics, and innovative IoT solutions tailored for the mining and metallurgical industries. EAMS Africa's contributions significantly enhance our ability to optimize asset lifecycles, minimize downtime, and maximize operational efficiency for our clients.

ENGCONOMICS

An engineering consultancy specializing in creating value through synchronicity in engineering, reliability, performance, and analysis. Engconomics enhances our ability to deliver data-driven solutions and insights by integrating advanced analytics with engineering principles. Their expertise in performance optimization and reliability engineering allows us to offer our clients sophisticated strategies for improving overall operational effectiveness and resource utilization.

OUR PARTNERSHIP NETWORK ALSO INCLUDES A SOUTH AFRICAN-BASED CONSULTING FIRM SPECIALIZING IN BUSINESS PERFORMANCE ENHANCEMENT AND OPERATIONAL EXCELLENCE.

This firm brings additional expertise in steel-related metallurgical and mechanical engineering consulting, including specialized knowledge in failure analysis and welding technology. Their services extend to leadership development and coaching, strategic planning and implementation, and comprehensive human resource management, including payroll and CIPC services for company registrations and legal documentation. This partnership further strengthens our ability to offer holistic solutions that address not only technical challenges but also organizational and strategic aspects of mining and metallurgical operations.



Our core team comprises industry-leading professionals with extensive experience in various fields crucial to the mining and metallurgical sectors. **This diverse group of experts brings a wealth of knowledge and practical experience to every project:**

CHEMICAL ENGINEERING & METALLURGY EXPERTS

Our team comprises senior experts with over 30 years of experience in the mining and metallurgical industry, particularly in copper smelting and processing operations. **They provide commercial, technical, and operational management services, covering a wide range of expertise:**

- Smelter management, optimization, and production, significantly increasing throughput capacities while reducing operating costs and maximizing efficiencies in smelting operations
- Environmental management, including acid plant construction and commissioning
- Logistics expertise for remote smelting operations
- Technology integration, including the conversion of furnaces to more efficient processes
- Asset management for surface operations, smelters, refineries, and rod plants
- Process improvement in grinding circuits and flotation technologies
- Large-scale capital project management
- Reengineering of refractory divisions
- Commissioning and management of copper rod mills
- Marketing and sales of copper products



ENVIRONMENTAL & SUSTAINABILITY SPECIALISTS

We have experts with over 25 years of experience in environmental management and sustainability within the mining and metallurgical sectors. **Their areas of expertise include:**

- Derisking smelters processing complex concentrate feed, for example, implementing cleantech processes for minimising arsenic levels, both operationally and as legacy waste
- Development and implementation of environmental management systems
- Corporate sustainability reporting
- Regulatory compliance across multiple jurisdictions
- Remediation and decontamination strategies
- ESG risk management and stakeholder engagement
- Climate strategy development
- ESG due diligence assessments for mergers and acquisitions
- Air quality & emission strategy
- Innovative solutions for hazardous waste management
- Environmental impact assessments for mining and processing operations
- Improving/building social and political license to operate metals processing facilities in challenging jurisdictions

INDUSTRIAL & PRODUCTION ENGINEERING EXPERTS

Our team includes industrial engineers with over two decades of experience in engineering, production management, and operations. **Their expertise covers:**

- Coal supply and quality assurance
- Multi-plant management in various industries
- Production management in refractory manufacturing
- HR, procurement, quality control, and customer relations
- Management of agreements and customer service in refractory solutions

METALLURGY & MATERIALS ENGINEERING SPECIALISTS

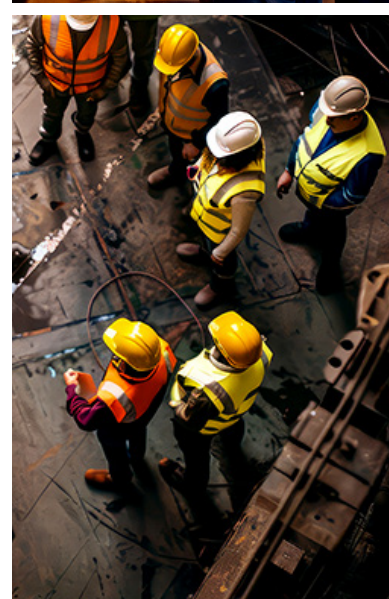
We have graduates in Metallurgy and Materials Engineering with specializations in Minerals Processing. **Their expertise includes:**

- Technical direction of manufacturing processes
- Plant and product optimization
- Management of capital project orders
- Operations management of multiple manufacturing plants
- Coal washing plant management and optimization
- Implementation of SHEQ management systems

OPERATIONS, MARKETING, AND SALES EXPERTS

Our team includes professionals in Metallurgical Engineering and additional qualifications in management and operational leadership. **Their expertise covers:**

- Supply demand management and compliance
- Marketing strategy development
- Raw material sourcing and brick manufacturing
- Business and value planning in copper production
- Metallurgical accounting for copper smelters and refineries
- Smelter management and converter operations
- Process optimization in mineral processing
- Research and development in pilot plant furnaces
- Instrumentation expertise related to PLC and SCADA systems





NETWORK OF INDEPENDENT INDUSTRY EXPERTS

In addition to our core team and strategic partners, **DGC MetPro Solutions** maintains a robust network of independent industry experts. These professionals are leaders in their respective fields and are called upon to provide specialized insights, peer reviews, and additional support for our projects as needed. **This network includes:**

- **Veteran metallurgists** with decades of experience in various mineral processing operations
- **Environmental specialists** with expertise in mining-specific regulations and sustainable practices
- **Process optimization experts** with track records of implementing cutting-edge technologies
- **Asset management professionals** with deep knowledge of maintenance strategies in harsh mining environments
- **Safety and risk management consultants** specializing in the unique challenges of the mining industry
- **Geotechnical engineers** with expertise in complex mining structures and environments
- **Mineral economists** who provide insights into market trends and economic feasibility of projects



BY LEVERAGING THIS EXTENSIVE NETWORK, WE ENSURE THAT WE ALWAYS HAVE ACCESS TO THE MOST CURRENT INDUSTRY KNOWLEDGE & SPECIALIZED EXPERTISE, ALLOWING US TO TACKLE EVEN THE MOST COMPLEX & UNIQUE CHALLENGES OUR CLIENTS MAY FACE



This combination of our core team, strategic partnerships, and network of independent experts allows **DGC MetPro Solutions** to offer truly comprehensive, cutting-edge solutions tailored to the complex challenges faced by the mining and metallurgical industry. Our ability to bring together the right experts for each specific project ensures that our clients always receive the highest quality of service and the most innovative, effective solutions available in the industry.



DGC'S METPRO SOLUTIONS

COMPREHENSIVE SERVICE OFFERINGS

TECHNOLOGY INTEGRATION & ENHANCEMENT

ADVANCED PROCESS OPTIMIZATION

PROCESS PLANT DE-BOTTLENECKING

ENVIRONMENTAL MANAGEMENT & COMPLIANCE

FEASIBILITY & VIABILITY STUDIES

OPERATIONAL EFFICIENCY & TRAINING

DIGITAL TWIN TECHNOLOGY

ADVANCED PROCESS CONTROL

ENERGY OPTIMIZATION

WATER MANAGEMENT

AUTOMATION & ROBOTICS

TAILINGS MANAGEMENT

REMOTE OPERATIONS

GEOTECHNICAL ENGINEERING

MINE CLOSURE & REHABILITATION

SPECIALIZED SOFTWARE DEVELOPMENT

ASSET INTEGRITY MANAGEMENT (AIM)

ONLINE CONDITION MONITORING

TECHNOLOGY INTEGRATION & ENHANCEMENT

We evaluate new and existing systems to determine solutions for optimization. We develop custom solutions that enhance both operational efficiency and environmental sustainability. Post-installation, we optimize the newly integrated systems to ensure peak efficiency, increased capacity, reduced environmental impact, and lower operational costs.

KEY ASPECTS:

- **Optimizing Mining and Smelting Operations:** Utilizing best practices to support and execute strategies for both new and existing systems.
- **Custom Solutions:** Developing tailored strategies to enhance operational efficiency and environmental sustainability.
- **Optimization:** Ensuring peak performance, increased capacity, reduced environmental impact, and lower operational costs through continuous system optimization.



ADVANCED PROCESS OPTIMIZATION

This service addresses the complexities of metallurgical processes to optimize recoveries of metal from varying grades and mineralogy. We employ best practice techniques to enhance metal recovery rates, improve product purity, and reduce the impacts of impurities. Our continuous improvement initiatives ensure operations remain adaptable to evolving ore characteristics and market demands, maintaining operational efficiency and regulatory compliance.

KEY ASPECTS:

- **Managing metallurgical processes** to optimize recoveries from ores with variable compositions.
- **Enhancing metal recovery rates**, improving product purity, and reducing impurities.
- **Implementing continuous improvement initiatives** to maintain operational efficiency.

PROCESS PLANT DE-BOTTLENECKING

We focus on identifying and alleviating key processing bottlenecks to enhance production throughputs while optimizing recoveries. Our strategy includes upgrading legacy systems to boost efficiency and productivity, and transitioning from manual to automated process controls. This approach reduces errors, increases efficiency, and optimizes the entire production chain. By analyzing each stage of the process, we identify constraints and implement targeted solutions, ensuring a seamless flow and maximized output.

KEY ASPECTS:

- **Identifying and alleviating key bottlenecks** in processing operations.
- **Upgrading legacy systems** and transitioning to automated process controls.
- **Ensuring seamless flow** and maximized output in production chains.

ENVIRONMENTAL MANAGEMENT & COMPLIANCE

Our focus is on tailored strategies for significant emission reductions, particularly targeting pollutants like sulphur dioxide. A key element is the development and enhancement of acid plants, which transform emissions into sulphuric acid. This approach not only mitigates environmental impact but also generates additional revenue streams. We implement continuous monitoring systems and ensure strict adherence to environmental regulations, positioning our operations for long-term sustainability and a reduced ecological footprint.

KEY ASPECTS:

- **Developing strategies** for significant emission reductions, particularly targeting pollutants like sulphur dioxide.
- **Enhancing acid plants** to transform emissions into sulphuric acid, thereby reducing environmental impact.
- **Implementing continuous monitoring systems** to ensure strict adherence to environmental regulations.
- **Increasing overall sulphur capture** throughout the smelting operation.

FEASIBILITY & VIABILITY STUDIES

We conduct comprehensive studies to evaluate the potential of new or expanding operations, delivering insights into economic prospects, environmental considerations, and technical viability. We incorporate advanced risk analysis techniques to identify and mitigate potential issues before they arise. The final deliverables are detailed roadmaps that inform investment decisions, ensuring projects are both economically sound and environmentally sustainable. These studies cover market analysis, resource evaluation, process design, financial modelling, and risk assessment.

KEY ASPECTS:

- **Conducting comprehensive studies** to evaluate the potential of new or expanding operations.
- **Providing detailed roadmaps** that inform investment decisions, ensuring economic and environmental sustainability.

OPERATIONAL EFFICIENCY & TRAINING

Our service optimizes daily operations by implementing strategies that improve workflows, reduce costs, and include coaching and mentoring. We offer tailored training programs to equip staff with the latest skills in modern technologies and methods. By promoting the use of advanced data analytics, we enhance decision-making processes, fostering a culture of continuous improvement. This ensures that operations remain competitive and in line with industry developments. Our training programs encompass both technical skills and safety protocols, nurturing a culture of excellence and responsible operation.

KEY ASPECTS:

- **Optimizing daily operations** through workflow improvements, cost reduction strategies, and coaching and mentoring.
- **Offering tailored training programs** on modern technologies and methods.
- **Promoting the use of advanced data analytics** for enhanced decision-making processes.



DIGITAL TWIN TECHNOLOGY

We implement digital twin solutions for process optimization and predictive maintenance, allowing for real-time monitoring and simulation of operations. This technology creates a virtual replica of physical assets, processes, and systems, enabling advanced analytics, scenario testing, and predictive maintenance. By leveraging real-time data, we help clients make informed decisions, optimize performance, and prevent costly downtime.

KEY ASPECTS:

- **Implementing digital twin solutions** for real-time monitoring and simulation of operations.
- **Using real-time data** to optimize performance and prevent costly downtime.

ADVANCED PROCESS CONTROL

Our team develops and implements advanced process control systems using AI and machine learning, enhancing operational efficiency and product quality. These systems continuously analyse process variables, making real-time adjustments to optimize performance. By reducing variability and improving consistency, we help clients achieve higher yields, lower energy consumption, and improved product quality.

KEY ASPECTS:

- **Developing and implementing advanced process control systems** using AI and machine learning.
- **Reducing variability, improving consistency, and achieving higher yields** with lower energy consumption.

ENERGY OPTIMIZATION

Our service optimizes daily operations by implementing strategies that improve workflows, reduce costs, and include coaching and mentoring. We offer tailored training programs to equip staff with the latest skills in modern technologies and methods. By promoting the use of advanced data analytics, we enhance decision-making processes, fostering a culture of continuous improvement. This ensures that operations remain competitive and in line with industry developments. Our training programs encompass both technical skills and safety protocols, nurturing a culture of excellence and responsible operation.

KEY ASPECTS:

- **Optimizing daily operations** through workflow improvements, cost reduction strategies, and coaching and mentoring.
- **Offering tailored training programs** on modern technologies and methods.
- **Promoting the use of advanced data analytics** for enhanced decision-making processes.





WATER MANAGEMENT

Our comprehensive water management solutions for mining operations include recycling and treatment technologies, addressing critical environmental and operational challenges. We design and implement closed-loop water systems, advanced water treatment plants, and water conservation strategies. These solutions not only ensure compliance with environmental regulations but also reduce operational costs and mitigate risks associated with water scarcity.

KEY ASPECTS:

- Designing and implementing comprehensive water management solutions, including recycling and treatment technologies.
- Ensuring compliance with environmental regulations and reducing operational costs.

AUTOMATION & ROBOTICS

We integrate cutting-edge automation and robotic solutions in mining and processing operations, improving safety and efficiency. This includes the implementation of autonomous drilling and haulage systems, robotic sorting and handling systems, and automated process control. By reducing human exposure to hazardous environments and optimizing repetitive tasks, we enhance both safety and productivity.

KEY ASPECTS:

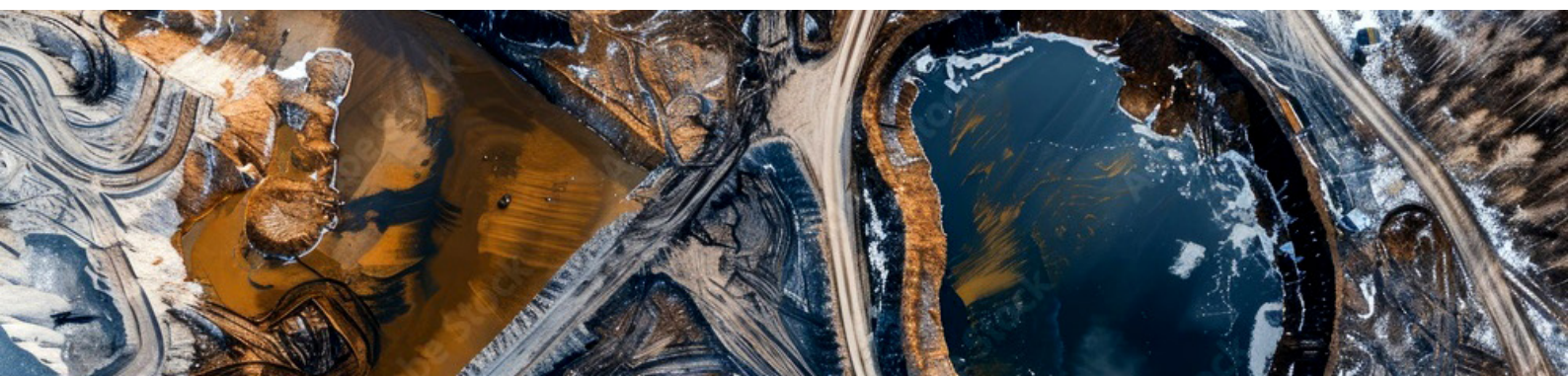
- Integrating cutting-edge automation and robotic solutions to improve safety and efficiency.
- Implementing autonomous systems and robotic sorting for optimized operations.

TAILINGS MANAGEMENT

Our innovative tailings management solutions address one of the industry's most pressing environmental concerns. We design and implement advanced dewatering technologies, dry stack tailings systems, and tailings reprocessing solutions. Our approach focuses on minimizing environmental risks (including the fate of hazardous smelting by products such as arsenic), maximizing water recovery, and exploring opportunities for value extraction from tailings, turning a liability into a potential asset.

KEY ASPECTS:

- Designing advanced dewatering technologies and tailings reprocessing solutions.
- Minimizing environmental risks and maximizing water recovery.





REMOTE OPERATIONS

We set up remote operation centres and implement technologies for remote monitoring and control, enhancing operational flexibility and safety. This includes the design of integrated control rooms, implementation of reliable communication systems, and deployment of IoT sensors for real-time data collection. Remote operations reduce on-site personnel requirements, improve decision-making through centralized expertise, and enable rapid response to changing conditions.

KEY ASPECTS:

- **Setting up remote operation centres and technologies** for enhanced operational flexibility and safety.
- **Deploying IoT sensors** for real-time data collection and centralized expertise.

GEOTECHNICAL ENGINEERING

Our specialized geotechnical services support the unique requirements of mining projects. We conduct detailed site investigations, stability analyses, and design of mine structures such as pit slopes, underground openings, and waste rock dumps. Our geotechnical expertise ensures the safety and stability of mining operations, optimizes resource recovery, and minimizes geotechnical risks.

KEY ASPECTS:

- **Providing specialized geotechnical services** for mining projects, including stability analyses and design of mine structures.
- **Ensuring safety, stability, and optimized resource recovery.**

MINE CLOSURE & REHABILITATION

We offer planning and execution services for mine closure and land rehabilitation projects, ensuring responsible and sustainable practices. Our comprehensive approach covers environmental impact assessments, development of closure plans, implementation of land reclamation techniques, and post-closure monitoring. We help clients meet regulatory requirements while creating positive legacies in their operating communities.

KEY ASPECTS:

- **Offering planning and execution services** for mine closure and land rehabilitation projects.
- **Ensuring responsible practices** and creating positive legacies in operating communities.



SPECIALIZED SOFTWARE DEVELOPMENT

Our team develops custom software solutions tailored to the specific needs of mining and metallurgical operations. This includes the creation of integrated mine planning software, process simulation tools, and data management systems. By developing bespoke software solutions, we help clients streamline their operations, improve data integrity, and gain valuable insights for strategic decision-making.

KEY ASPECTS:

- **Developing custom software solutions** tailored to the specific needs of mining and metallurgical operations.
- **Streamlining operations** and improving data integrity with bespoke software solutions.



ASSET INTEGRITY MANAGEMENT (AIM)

Our AIM solutions ensure asset integrity, efficiency, and safety throughout their lifecycle. We enhance performance and reliability of critical industrial assets in mining through MRO optimization, condition monitoring, consulting, training, software integration, and analytics. This comprehensive approach maximizes asset value while minimizing risks to health, safety, and the environment.

KEY ASPECTS:

- **Ensuring asset integrity, efficiency, and safety** throughout the lifecycle of industrial assets.
- **Enhancing plant and equipment performance and reliability** through MRO optimization, condition monitoring, consulting, and training.

ONLINE CONDITION MONITORING

We provide advanced real-time monitoring solutions for critical mining assets. Using wireless technologies, IoT sensors defect reporting dashboards and advanced analytical tools, we enable continuous asset health tracking, detecting anomalies and potential failures. Integrating with existing AIM frameworks, our system offers a comprehensive view of asset performance, helping prevent downtime and optimize maintenance, crucial for mining operations' reliability and efficiency.

KEY ASPECTS:

- **Providing advanced real-time monitoring solutions** for critical mining assets.
- **Enabling continuous asset health tracking** and optimizing maintenance to prevent downtime.
- **Advanced defect analysis** tools to identify and track equipment defects
- **Enable the implementation of effective predictive and prescriptive maintenance strategies** based on real time equipment condition.

OUR UNIQUE APPROACH TO SERVICE PROVISION

AT DGC METPRO SOLUTIONS,
WE BELIEVE IN
A PARTNERSHIP
APPROACH
THAT ALIGNS OUR SUCCESS
DIRECTLY WITH THAT OF OUR CLIENTS

Our service provision model is designed to create a win-win scenario, ensuring that we are fully invested in delivering tangible, measurable results for our clients.

RISK-SHARING ENGAGEMENT MODEL

We understand that investing in consultancy services can be a significant decision for many companies. To address this, we've developed a unique engagement model that minimizes upfront costs for our clients while maximizing the potential for shared success:

- **Initial Engagement:** We propose that clients initially cover only our basic costs, including travel, board, and lodging. This approach reduces the financial barrier to engaging our services and demonstrates our confidence in our ability to deliver value.
- **Performance-Based Remuneration:** Instead of charging high upfront fees, we propose to share in the commercial benefits that our services generate for the client. This model ensures that our success is directly tied to the improvements we bring to our clients' operations.
- **Long-Term Partnership:** We typically propose a benefit-sharing arrangement lasting several years. This extended period allows for the full realization and stabilization of the improvements we implement, while providing ongoing support and optimization.
- **Significant Return on Investment:** Our model is designed to deliver substantial returns for both our clients and our firm. We propose a percentage-based share of the savings or increased revenues that our services generate. This approach ensures that our clients see a significant net benefit from our engagement, while also allowing us to receive fair compensation for the value we create. The exact percentage and duration of this arrangement are tailored to each client's specific situation and the scope of improvements we deliver.



ADVANTAGES OF OUR APPROACH

ALIGNED INTERESTS

By tying our remuneration directly to the improvements we deliver, we ensure that our interests are perfectly aligned with those of our clients. We succeed only when our clients succeed.

REDUCED INITIAL RISK FOR CLIENTS

By covering only our basic costs upfront, clients can engage our services with minimal financial risk.

MOTIVATION FOR CONTINUOUS IMPROVEMENT

The benefit-sharing model incentivizes us to not only deliver initial improvements but to continually seek ways to optimize operations throughout the engagement period.

ACCESS TO TOP-TIER EXPERTISE

Our model allows us to bring our most experienced consultants to every project, as the potential for significant long-term returns justifies the investment of our top talent.

ONGOING SUPPORT & OPTIMIZATION

The extended nature of our engagements ensures that we're not just implementing solutions and leaving, but staying involved to ensure sustained success and continuous improvement.

SELF-FUNDING

The proposed service provision is self-funding, thereby not restricted to budgets. The model enhances revenues and reduces costs, thereby increasing free cashflows and profitability.



WHAT SETS US APART

In addition to our unique engagement model, several other factors distinguish DGC MetPro Solutions from other consultants in the field:

INTEGRATED EXPERTISE

Our alliance of partners brings together specialists from various fields, offering a truly holistic approach to metallurgical challenges. This integration allows us to address complex, multifaceted issues that other consultants might struggle to tackle comprehensively.

PRACTICAL INDUSTRY EXPERIENCE

Our team doesn't just consist of theoretical experts. Many of our consultants have held senior operational roles in the mining and metallurgical industries, bringing practical, hands-on experience to every project.

CUTTING-EDGE TECHNOLOGY INTEGRATION

We stay at the forefront of technological advancements in the industry, allowing us to implement state-of-the-art solutions that drive significant improvements in efficiency and productivity.

FOCUS ON SUSTAINABILITY

Our solutions always consider the long-term environmental and social impacts, helping our clients not just comply with current regulations but position themselves as industry leaders in sustainability.

CUSTOMIZED, DATA-DRIVEN SOLUTIONS

We don't believe in one-size-fits-all approaches. Every solution we develop is tailored to the specific needs and context of each client, backed by rigorous data analysis and industry benchmarks.

COMMITMENT TO KNOWLEDGE TRANSFER

We don't just implement solutions; we work closely with our clients' teams to ensure they understand and can maintain the improvements we introduce, fostering long-term capability building within their organizations.

GLOBAL EXPERTISE WITH LOCAL UNDERSTANDING

Our experience spans across continents, allowing us to bring global best practices while understanding and adapting to local contexts, particularly in African markets.

By choosing DGC MetPro Solutions, clients gain more than just a service provider – they secure a committed partner invested in their long-term success, with a proven track record of delivering substantial, measurable improvements across the mining and metallurgical value chain.



OUR IMPACT

Our integrated approach upgrades technical capabilities, instills a culture of innovation and environmental stewardship, and positions clients at the forefront of the industry. We enhance:

OPERATIONAL EXCELLENCE

By optimizing processes and implementing advanced technologies, we help our clients achieve significant improvements in operational efficiency, productivity, and product quality.

ENVIRONMENTAL SUSTAINABILITY

Our focus on environmental management and compliance helps clients reduce their ecological footprint, meet regulatory requirements, and maintain positive relationships with local communities.

COST REDUCTION

Through energy optimization, water management, and efficient asset management, we help clients significantly reduce operational costs.

RISK MITIGATION

Our comprehensive approach to risk assessment and management helps clients identify and address potential issues before they become problematic, enhancing overall operational stability.

INNOVATION CULTURE

By introducing cutting-edge technologies and methodologies, we help foster a culture of innovation within our clients' organizations, preparing them for future challenges and opportunities.

SAFETY ENHANCEMENT

Our focus on automation, remote operations, and advanced monitoring systems contributes to improved safety conditions for workers in mining and metallurgical operations.

SKILL DEVELOPMENT

Through our training programs and knowledge transfer initiatives, we contribute to the development of local talent, enhancing the overall skill level within the industry.

LONG-TERM SUSTAINABILITY

By addressing both immediate operational needs and long-term strategic challenges, we help ensure the sustainable growth and success of our clients' operations.



DGC MetPro Solutions, empowered by DGC AFRICA and its strategic alliances, stands as a leading provider of integrated Metallurgical, Process, Asset Management, and Optimization Solutions. Our unwavering commitment to innovation, sustainability, and excellence drives us to reshape the operational landscape of the mining and metallurgical industries.

The partnership between DGC AFRICA, LogiProc, Refractory & Metallurgical Solutions (RMS), EAMS Africa, and Engconomics, combined with our team of industry-leading professionals, offers a unique blend of theoretical knowledge and practical expertise.

Our multidisciplinary team brings a broad spectrum of skills to every project. This diverse expertise allows us to address complex challenges in the mining and metallurgical sectors, from process optimization and environmental compliance to technological integration and operational efficiency.

When clients choose our integrated Metallurgical, Process, Asset Management & Optimization Solutions, they gain more than just a service provider - they acquire a strategic partner committed to their success. Our professionals are dedicated to driving innovation, efficiency, sustainability, and asset integrity within your operations, ensuring that your business remains at the cutting edge of industry developments. With our combined expertise and client-focused approach, we are uniquely positioned to transform your metallurgical processes and foster long-term success in an ever-evolving industrial environment.

By choosing DGC MetPro Solutions, clients are not just investing in a service; they are partnering with a team of dedicated professionals who are committed to driving their success. Our comprehensive approach, cutting-edge technologies, and deep industry expertise position us as the ideal partner for mining and metallurgical companies looking to optimize their operations, enhance their environmental performance, and secure their long-term sustainability in a rapidly evolving global market.

WE ENSURE THAT OUR CLIENTS REMAIN AT THE FOREFRONT OF INDUSTRY ADVANCEMENTS & ACHIEVE SUSTAINED SUCCESS IN THE YEARS TO COME. TOGETHER, WE CAN SHAPE A MORE EFFICIENT, SUSTAINABLE, AND PROSPEROUS FUTURE FOR THE MINING AND METALLURGICAL INDUSTRIES.



OUR OFFICES

DGC INTERNATIONAL

E International@dgc-africa.com

2nd Floor, The AXIS, 26 Bank Street,
Cybercity, Ebene, 72201, Mauritius

DGC SOUTH AFRICA

Contact Person: Wynand Boshoff

T +27 16 421 3720

E sales@dgrpint.com

10 Smuts Avenue,
Vereeniging,
1930, South Africa

REGIONAL OPERATIONS

DGC NORTH-WEST

Contact Person: Gawie Hugo

T +27 83 391 0531

E Northwest@dgc-africa.com

DGC KWA-ZULU NATAL

Contact Person: Denver Gounden

T +27 73 161 9913

E Kzn@dgc-africa.com

DGC LIMPOPO

Contact Person: Walter Mulovhedzi

T +27 76 896 7676

E Limpopo@dgc-africa.com

DGC ZAMBIA

Contact Person: Warren du Plessis

T +260 761 83 2470

T +27 82 319 8005

E Zambia@dgc-africa.com

Plot 2394, Freedom Way,
Mufulira

DGC DEMOCRATIC REPUBLIC OF CONGO

Contact Person: Warren du Plessis

T +243 8996 49 493

T +27 82 319 8005

E DRC@dgc-africa.com

KOLWESI OFFICE

118 Avenue Kalima, Quartier Mutoshi,
Commune Manika / Kolwezi

LUBUMBASHI OFFICE

199 Avenue Mubanzo Quartier;
Golf Malela. Commune Lubumbashi,
Province du Haut-Katanga, République
démocratique du Congo

DGC MADAGASCAR

Contact Person: Abizar Pichori

T +261 32 112 2122

E Madagascar@dgc-africa.com

Lot Ivx 30 Bis Ankazomanga rue
Dr Raseta Antananarivo, 101,
Madagascar

DGC ZIMBABWE

Contact Person: Douglas Mhazo

T +263 772 514 480

E Zimbabwe@dgc-africa.com

311 Esap Way, Willowvale
Harare, Zimbabwe



www.dgc-africa.com